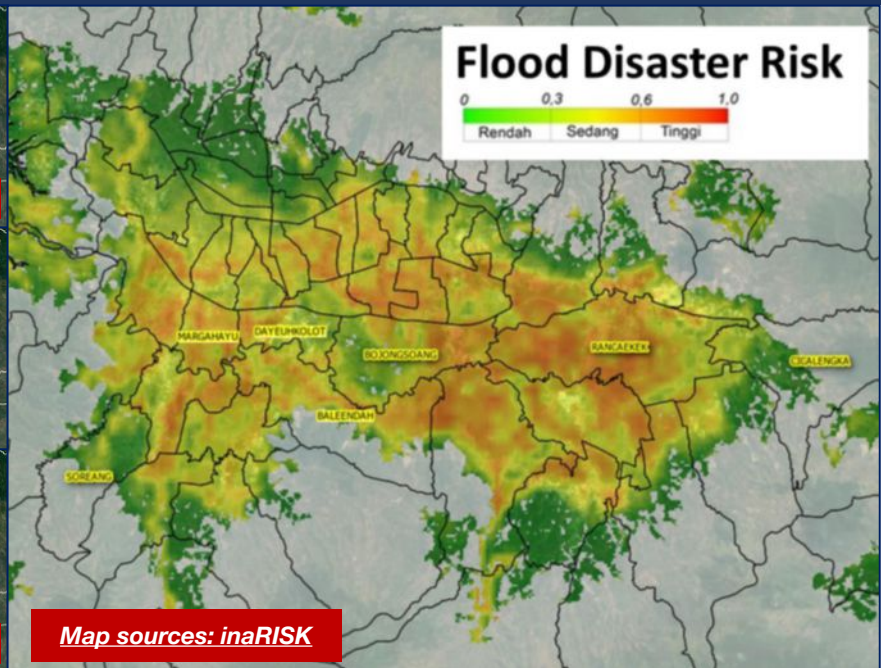
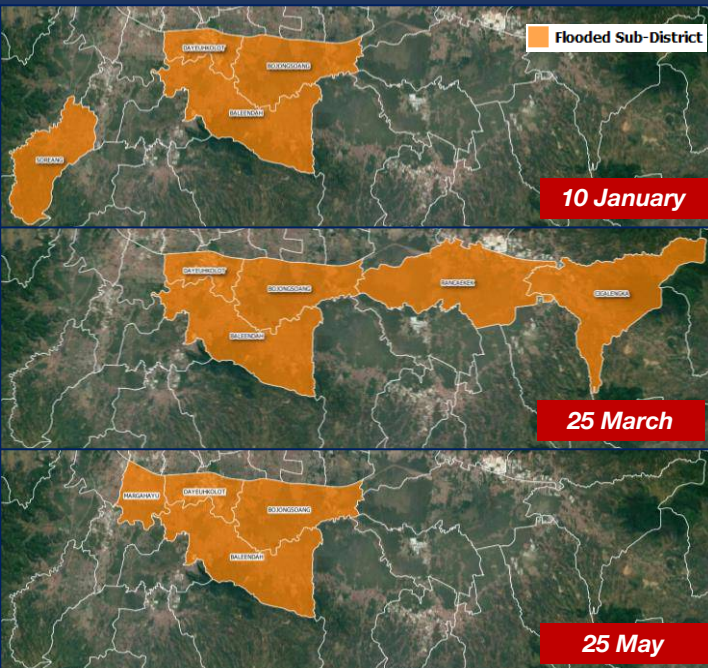


FLOODING IN BANDUNG REGENCY INDONESIA FLASH UPDATE #1



ONE ASEAN ONE RESPONSE



KEY FIGURES

Disclosure(s): Estimations are based on data reported/confirmed by National Disaster Management Organisations of the respective ASEAN Member State (Badan Nasional Penanggulangan Bencana (BNPB)) and other verified sources

59.8K
AFFECTED PERSONS

216
DISPLACED

8.8K
DAMAGED HOUSES

18
SCHOOLS AFFECTED

Indonesia

- According to the report from Indonesia's Badan Nasional Penanggulangan Bencana (BNPB), the flooding triggered by prolonged high intensity rain on 25 May at 0400 HRS UTC+7 has affected **Dayeuhkolot, Baleendah, Bojongsoang, and Margarahayu Sub-district** in Bandung, West Java.
- The Regional Disaster Management Agency (BPBD) of Bandung Regency reported that as many as **16,887 families** or **59,819 people** were affected by the flood (as of 25 March (1930 HRS UTC+7)). Data collection is still on-going for the damages caused by the flood and other impacts.
- As of reporting, **8,812 houses, 18 schools, and 28 places of worship** were submerged in flood waters that ranging from a depth of 20 to 250 cm (BNPB).
- According to the records in the ASEAN Disaster Information Network (ADINet), three of the four sub-districts that experienced flooding on 25 May (**Dayeuhkolot, Baleendah, and Bojongsoang Sub-district**) were previously flooded on **10 January** and **25 March**.

Sub-district	Flood Depth		
	10 January	25 March	25 May
Dayeuhkolot	10 – 90 cm	30 – 100 cm	20 – 250 cm
Baleendah	20 – 100 cm	20 – 110 cm	
Bojongsoang	10 – 70 cm	10 – 40 cm	

- BPBD-Bandung has coordinated with relevant agencies to conduct data collection, evacuate the victims and distribute logistics to the affected people. BPBD-Bandung also established a refugee tent and continues to coordinate with respective evacuation centres.
- **BMKG** forecasted that light intensity rainfall is expected in these four (4) sub-districts for the next few days.
- Bandung Regency is an area with frequent floods. Based on InaRISK, this is one of the areas with low to high flood potential. A total of 29 sub-districts have this potential danger, including the four sub-districts that experienced flooding (BNPB).
- The AHA Centre will continue to monitor for further developments and issue necessary updates.

DATA SOURCES

ASEAN Disaster Monitoring & Response System (DMRS); Pacific Disaster Center (PDC Global); Joint Typhoon Warning Center (JTWC)

Indonesia: BNPB, BPBD, InaRISK, BMKG

Verified news media agencies

DISCLAIMER

The AHA Centre was established in November 2011 by the Association of Southeast Asian Nations (ASEAN) Member States to facilitate cooperation and coordination among the Member States, relevant agencies of the United Nations, and international organisations in disaster management and humanitarian assistance.

The use of boundaries, geographic names, related information and potential considerations for response are for reference, not warranted to be error free or implying official endorsement from ASEAN Member States.

© 2021 AHA Centre. All rights reserved. You are receiving this email because you are registered in our distribution list.

Our mailing address is: AHA Centre, GRAHA BNPB 13th Floor, Jl. Raya Pramuka Kav. 38, Jakarta 13120 Indonesia